

MSB TECHNOLOGY

WINDOWS 7 USB INSTRUCTIONS

04/11

PAGE 1 - DRIVER INSTALLATION

PAGE 6 – FOOBAR2000 INSTALLATION AND SETUP

PAGE 15 – DRIVER REMOVAL

PAGE 17 – USB DEVICE FIRMWARE VERSION AND UPDATE

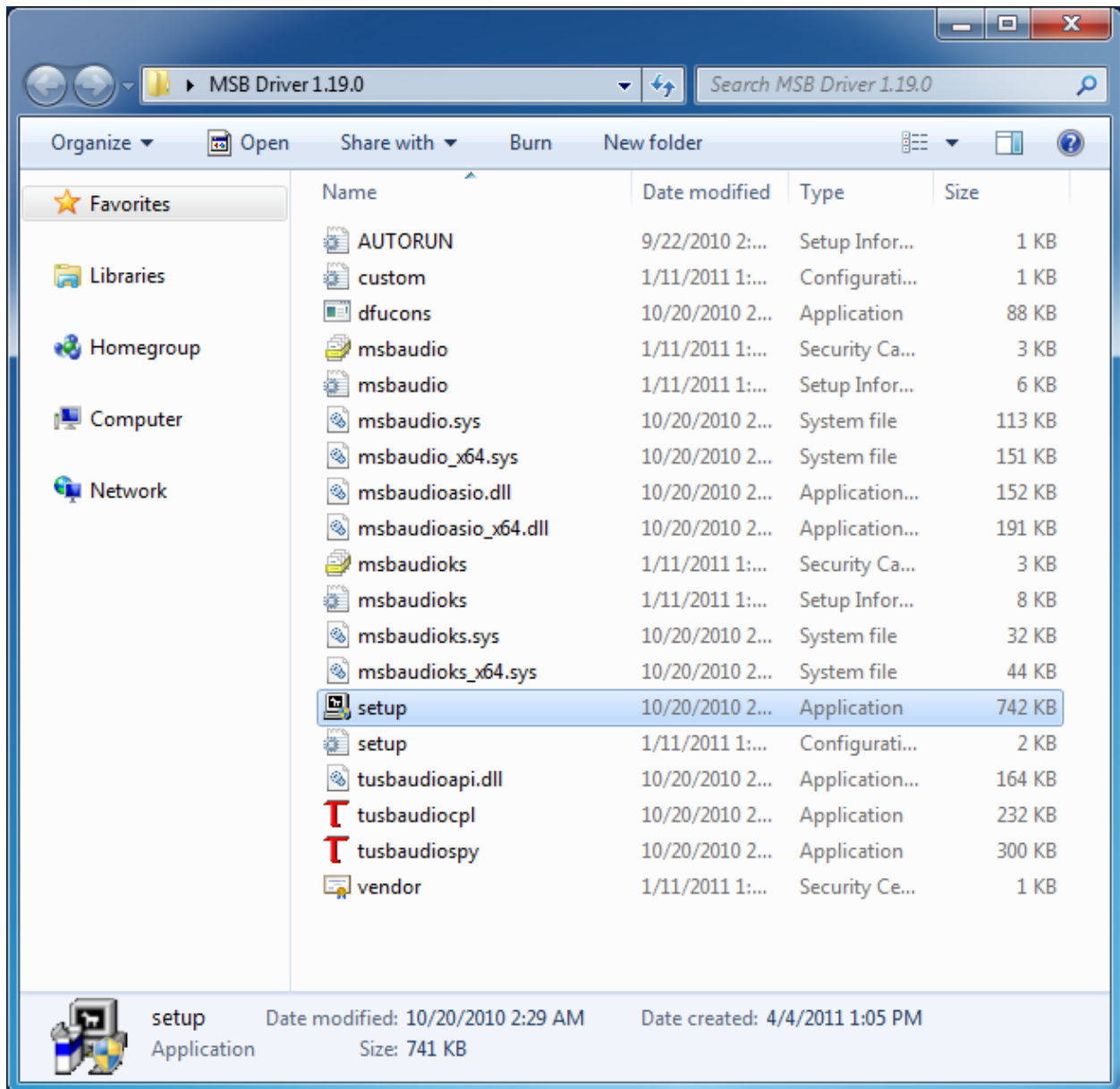
Installation of the MSB USB Driver

Note: For Windows 7, you must use driver version 1.19.0!

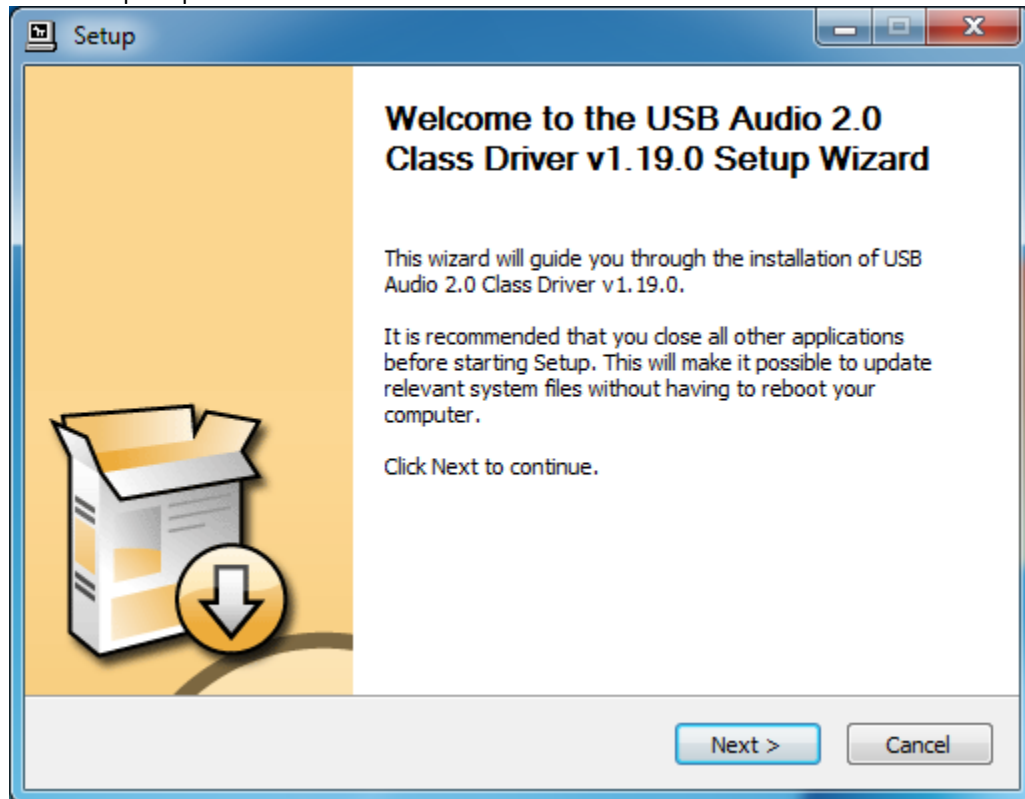
Please follow the instructions below carefully. If you have a previous version or have attempted to install the driver beforehand, please follow the removal instructions first.

FIRST MAKE SURE THE USB IS NOT PLUGGED IN! If the USB input is plugged into the computer when the installation is started it will fail. Only plug the cable in when instructed to do so!

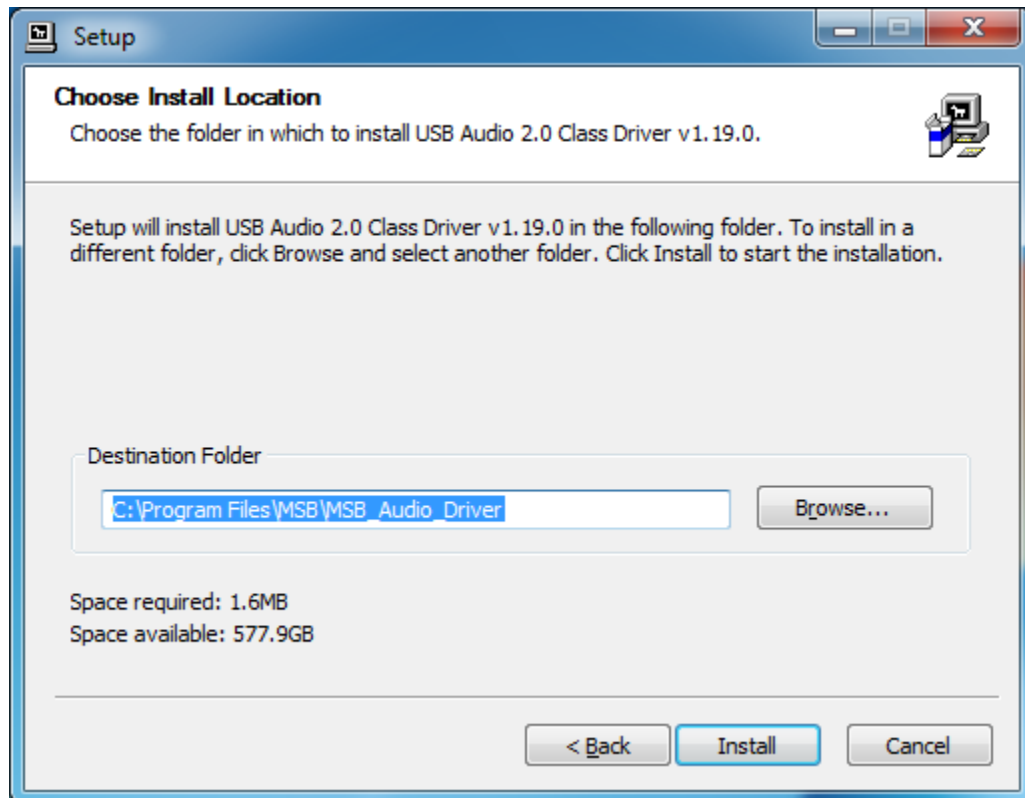
Just to make sure that everything works smoothly, please close all applications and give your computer a restart. After a restart, double-click the Setup.exe file located in the folder. Please make sure to remove the files from the .zip folder before starting.



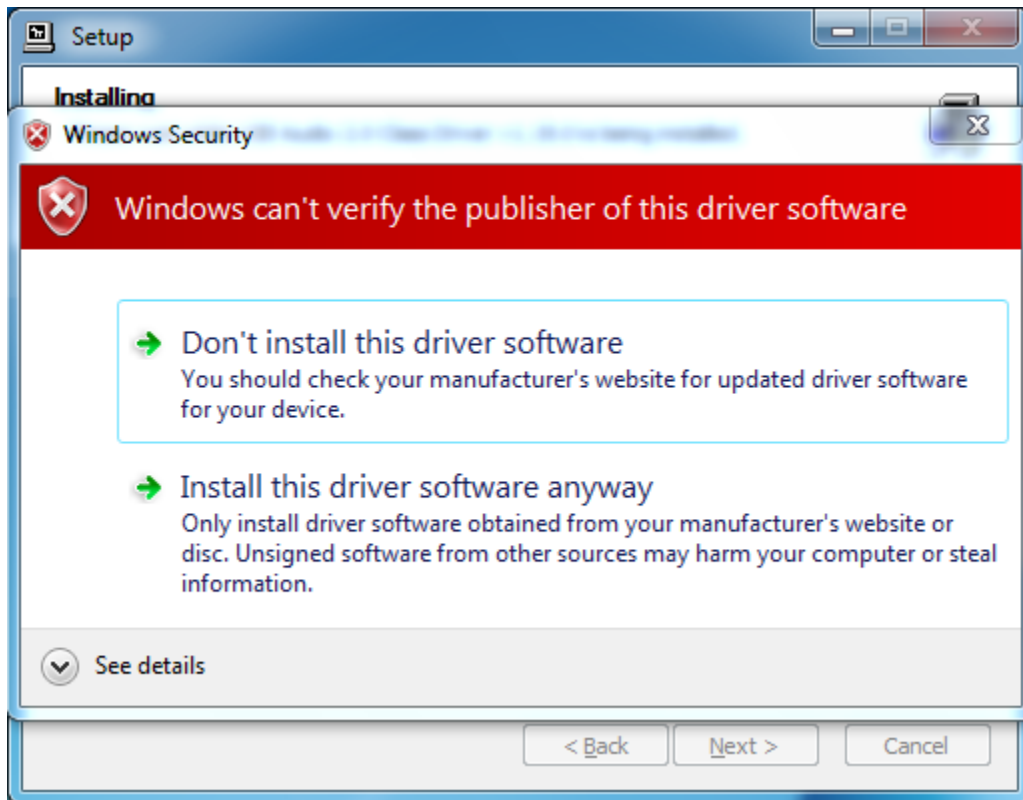
Follow the onscreen prompts.



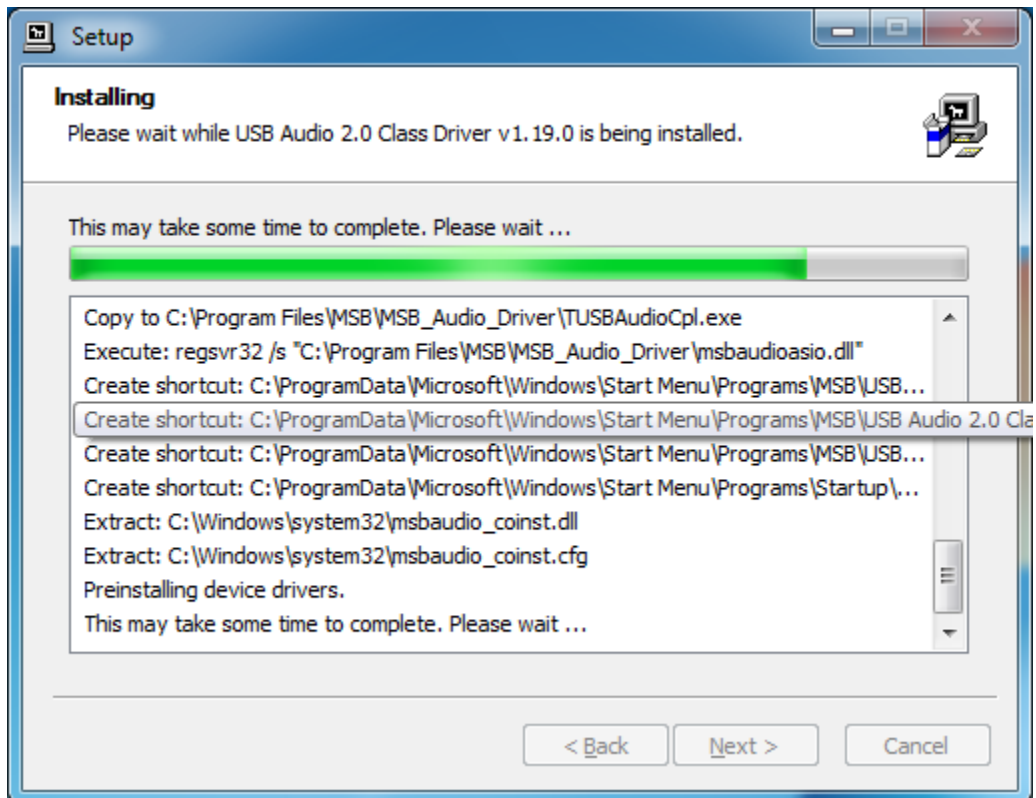
Click "Next"



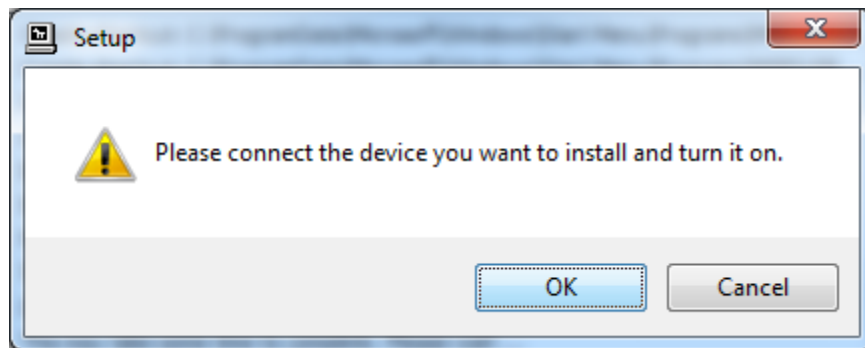
Click "Install"



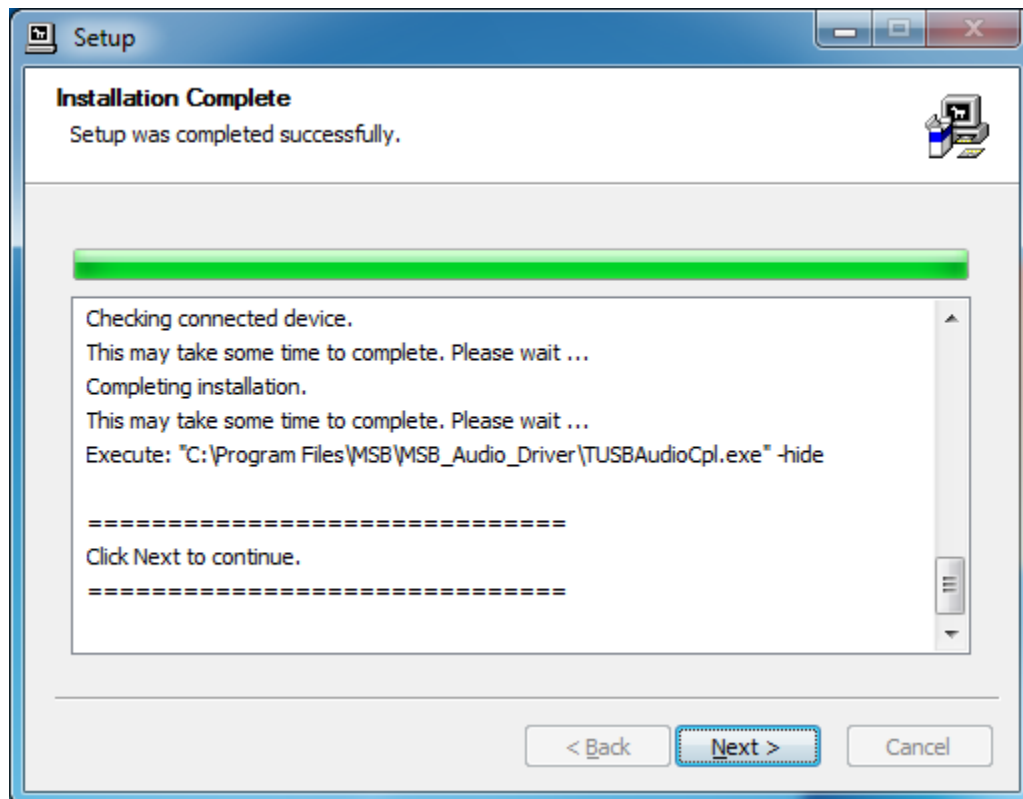
During the installation, this message will appear twice. Click, "Install this driver software anyway." This has to do with Windows 7 software verification system; it's nothing to worry about.



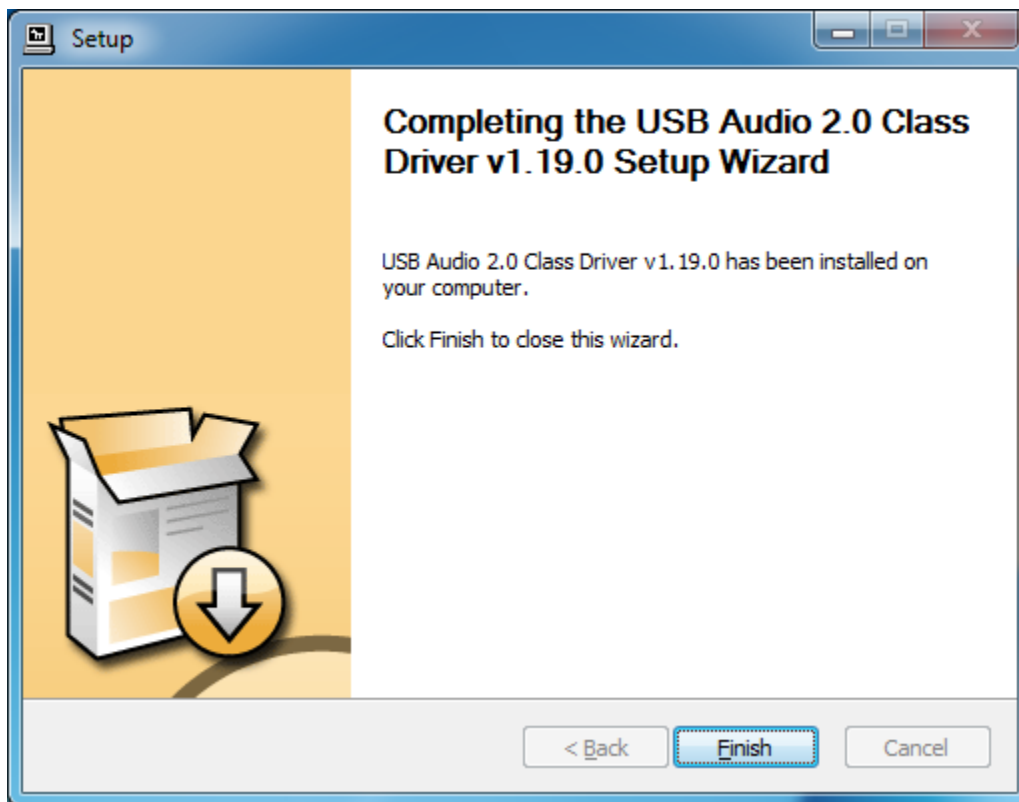
It will go back to the installation screen. Give it time to install.



The above window will pop up and ask you to plug your DAC in. At this time plug in your DAC and click, "ok."



Once finished you should get the above screen. Click "Next."



Your driver is now installed. Click "Finish" to finish and close the installation.

This driver includes the ASIO controls, so please don't try to install another ASIO program such as ASIO4ALL as it will only cause conflict with the software. Please follow the online instructions and videos showing you how to setup Foobar for bit-perfect playback.

Next you will find instructions on setting up Foobar with the correct plugin to allow for bit-perfect playback with automatic sample-rate detection and change.

foobar Installation and Setup Instructions

Foobar can be downloaded from:

<http://www.foobar2000.org/download>

The ASIO plugin for Foobar can be downloaded from:

http://www.foobar2000.org/components/view/foo_out_asio

After you have downloaded Foobar, run the foobar2000.exe file.

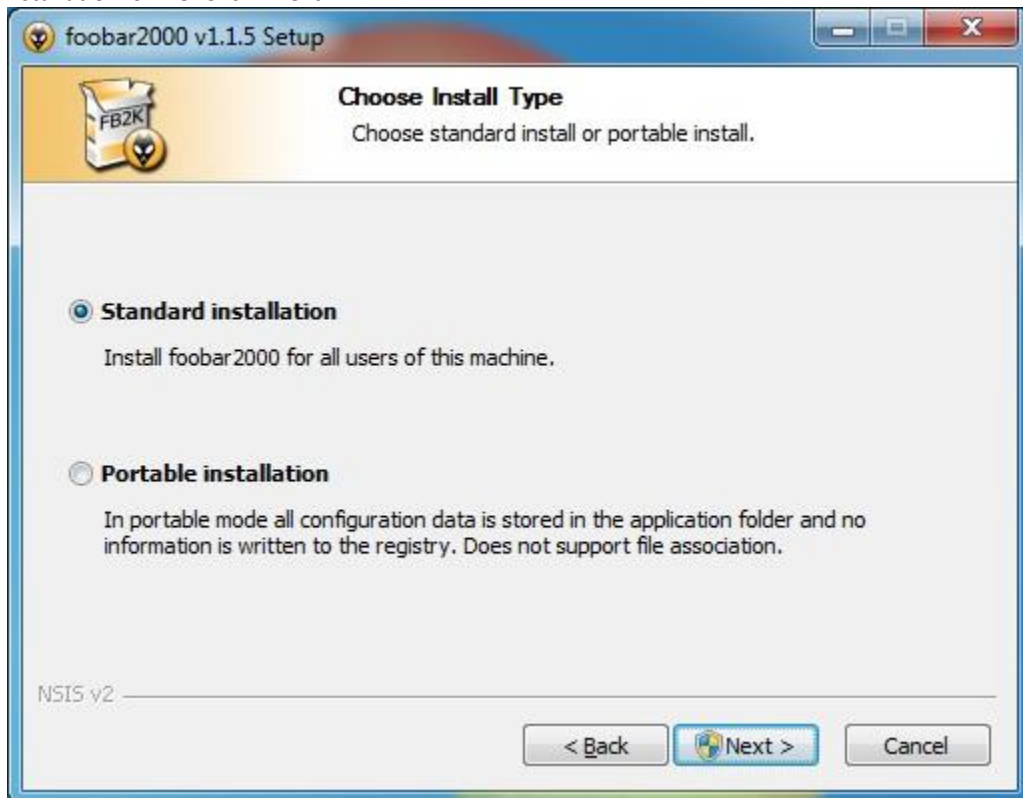
Click "Next"



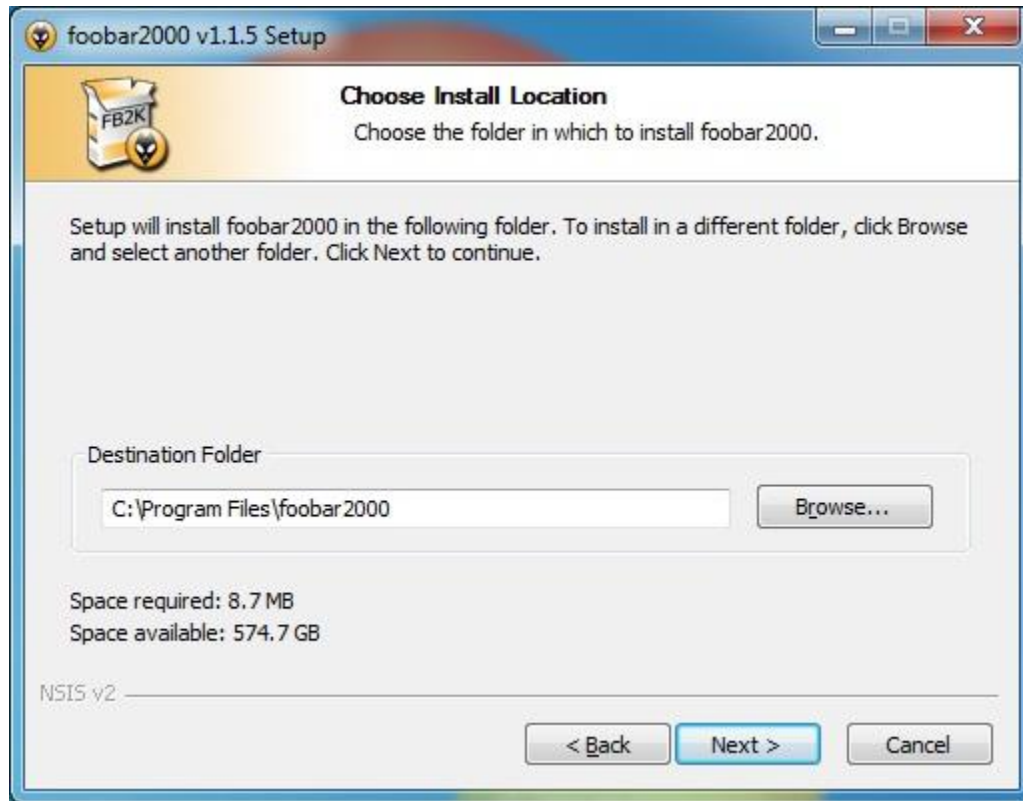
Click, "I Agree."



Standard installation is fine. Click "Next"

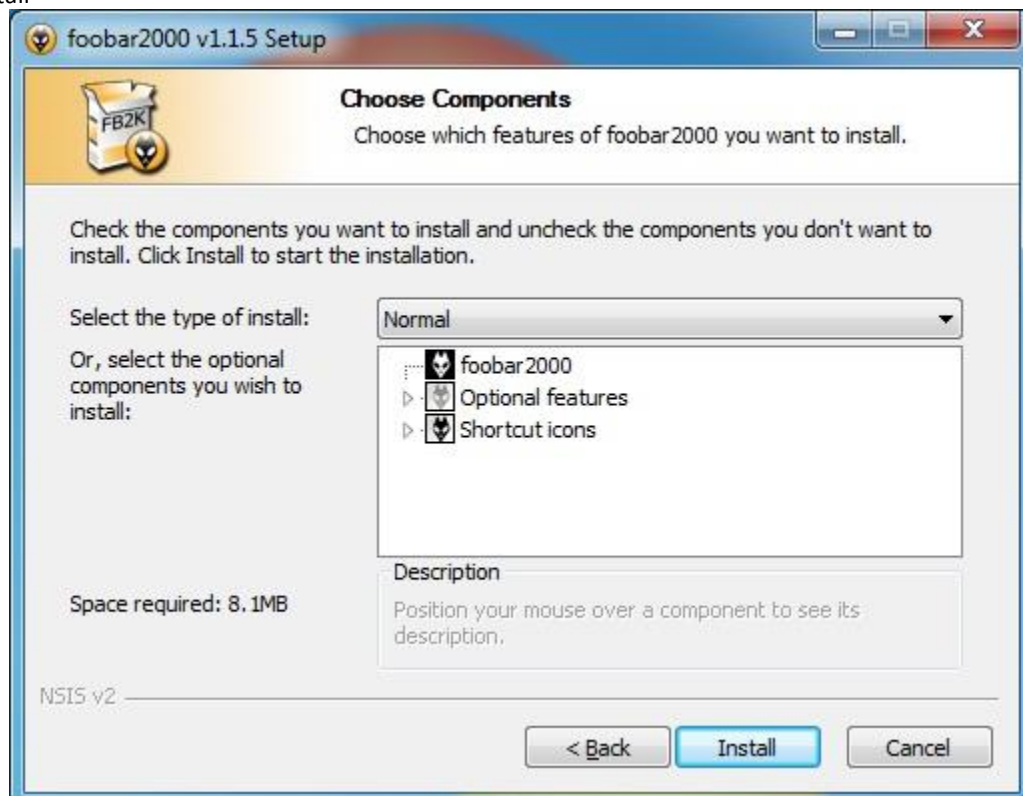


Click "Next"



Normal installation is fine. If you need to add or remove components, this would be the place.

Click "Install"

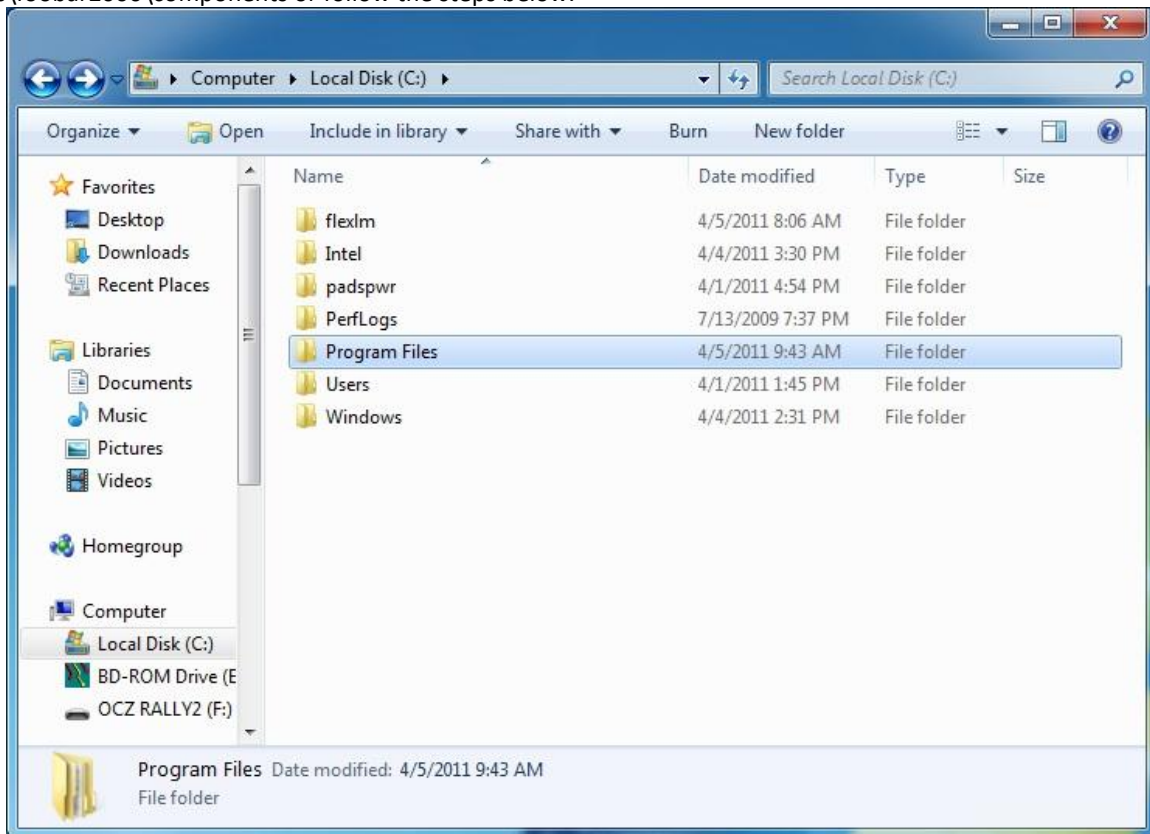


After installation, uncheck the “Run foobar2000” box and click “Finish”

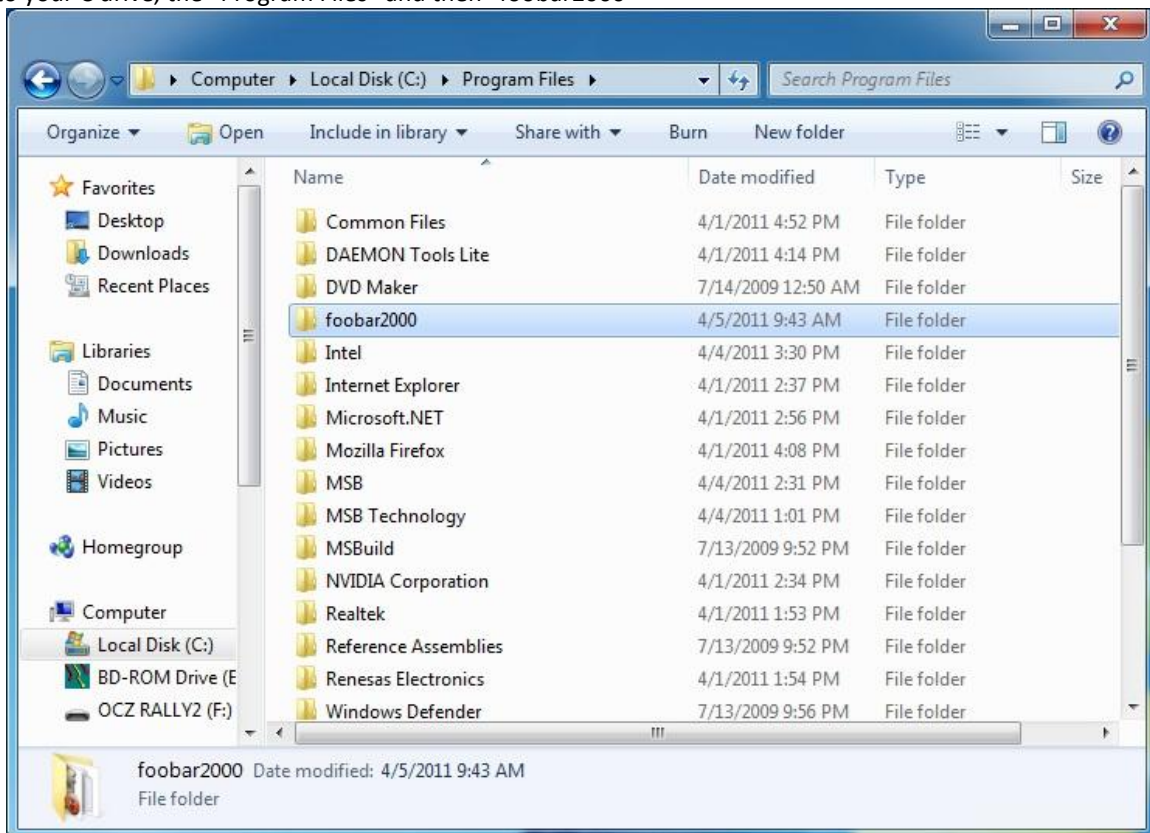


Next you need to install the ASIO plugin which will allow foobar2000 to take direct control of the USB Option in the DAC.

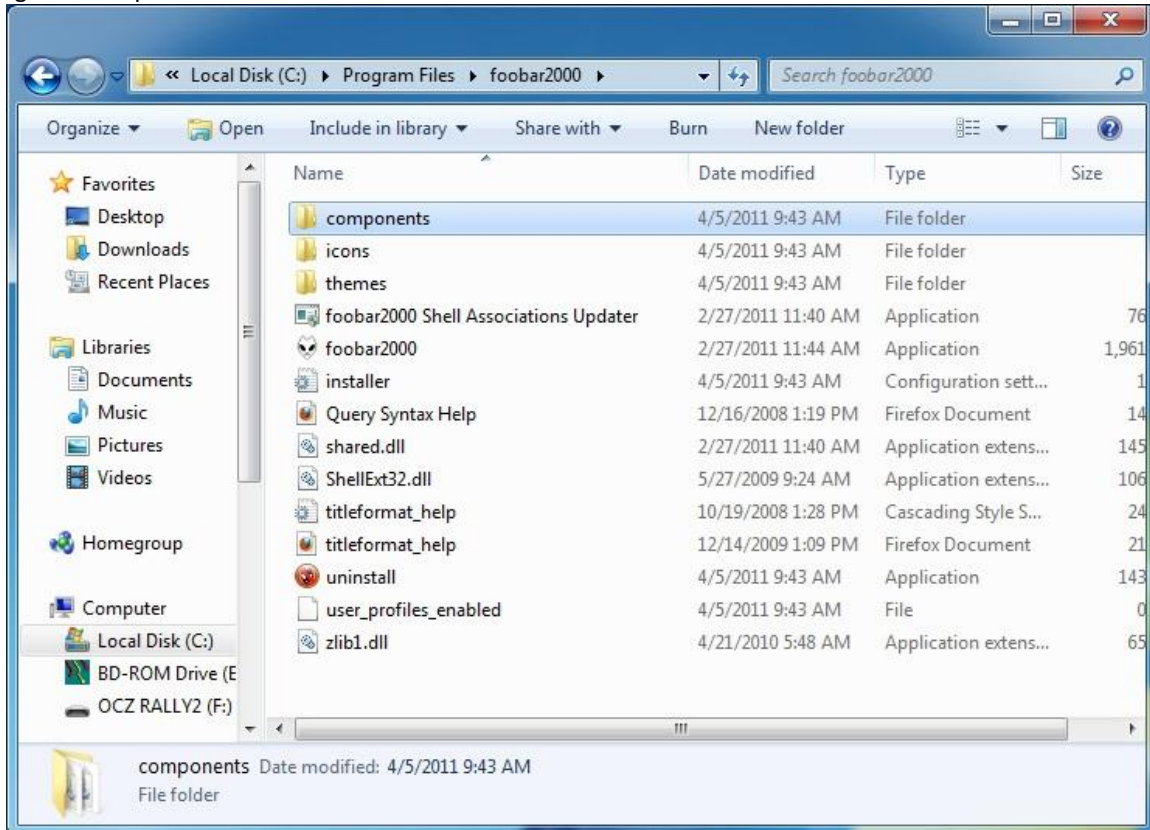
You need to go to the components folder for foobar2000. The location of this folder is C:\Program Files\foobar2000\components or follow the steps below.



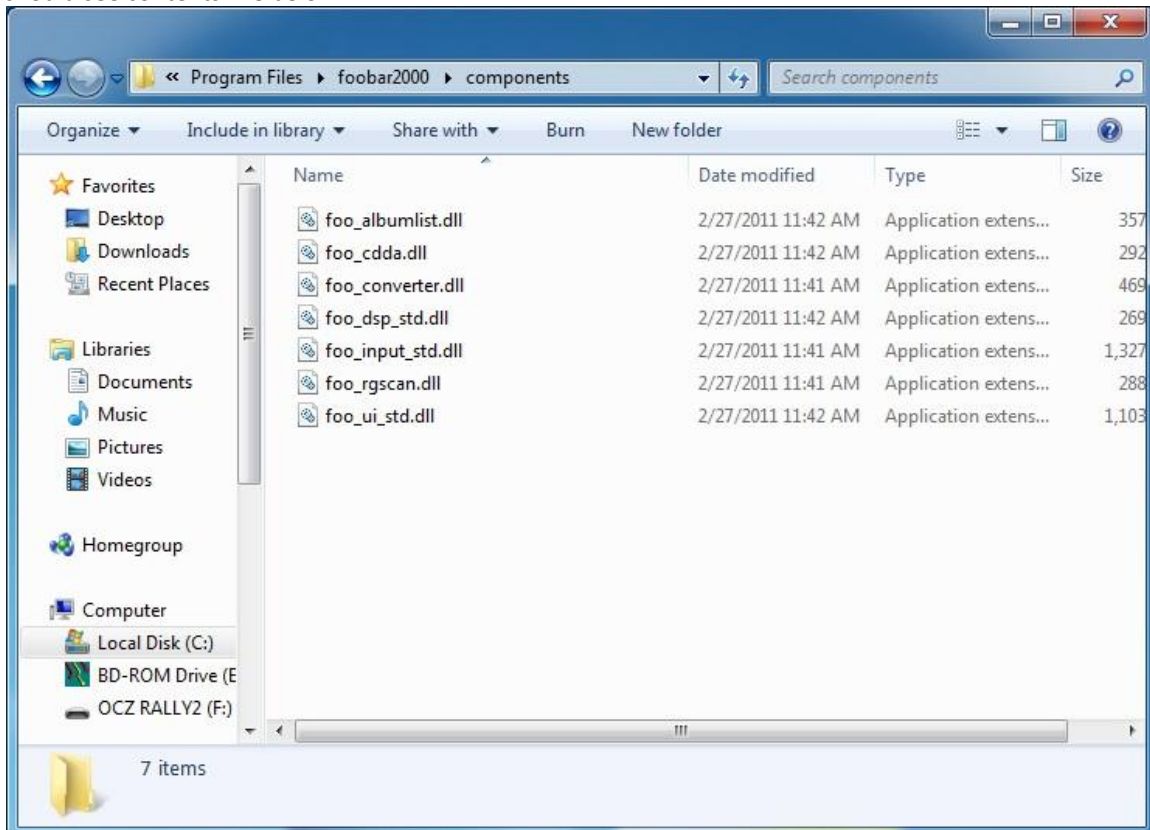
Go to your C drive, the “Program Files” and then “foobar2000”



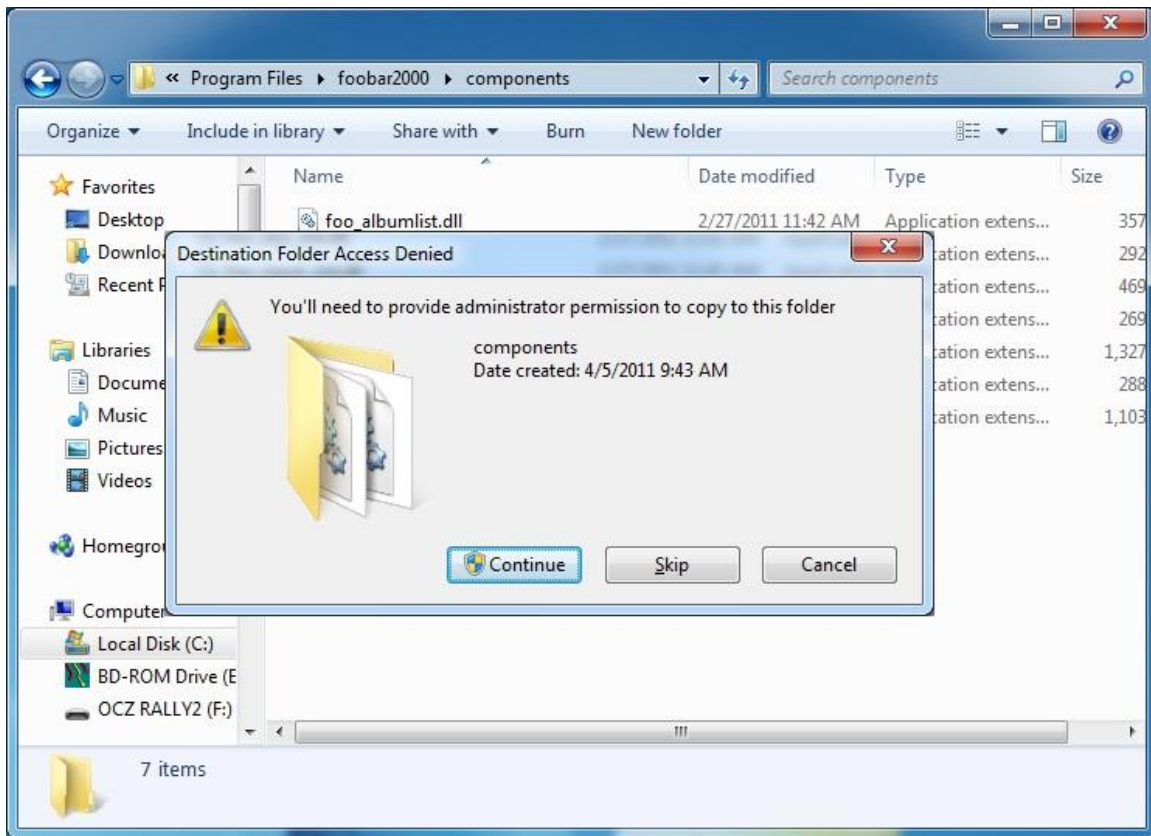
Next go to “components”



You should see contents like below

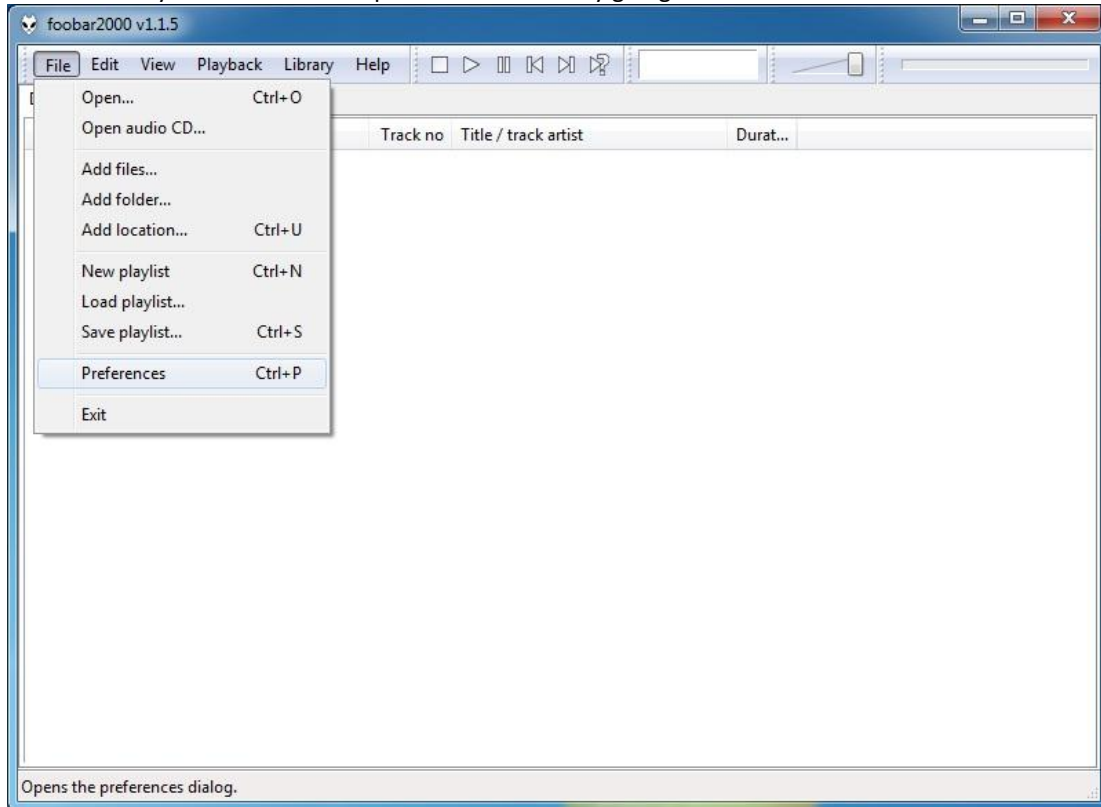


Add the file `foo_out_asio.dll` file to the folder. If you see a message like the one below, click “Continue”

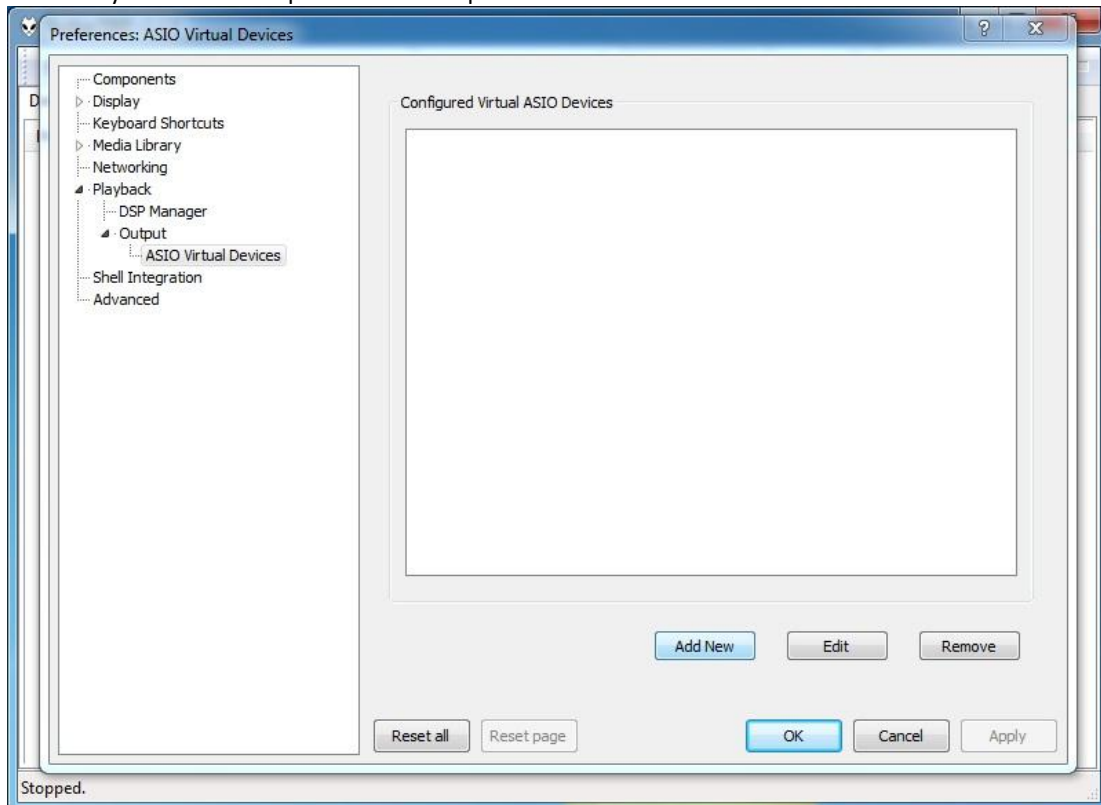


Now that the plugin component has been installed, it's time to enable it in foobar2000.

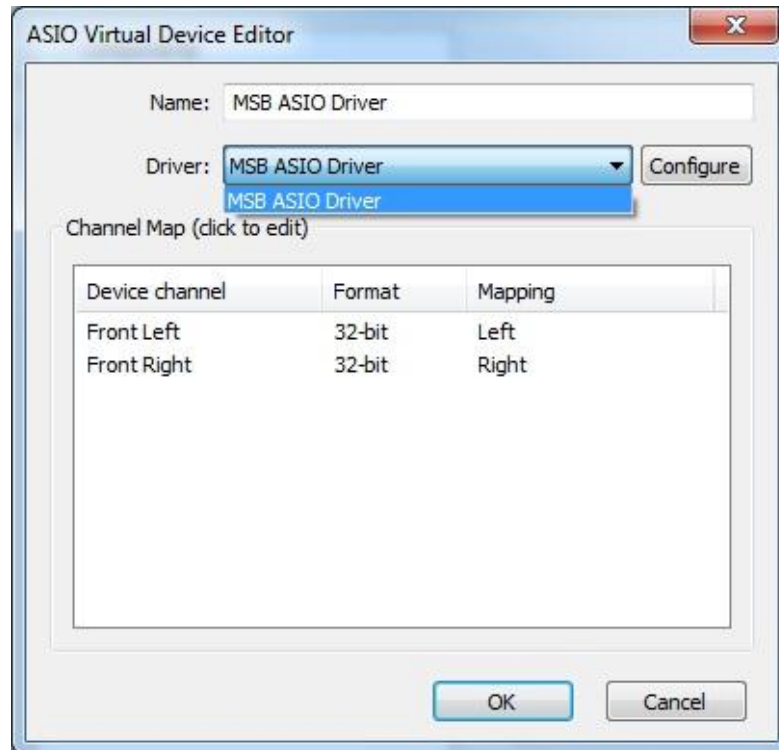
First make sure that you have the USB Input installed. Start by going to File → Preferences.



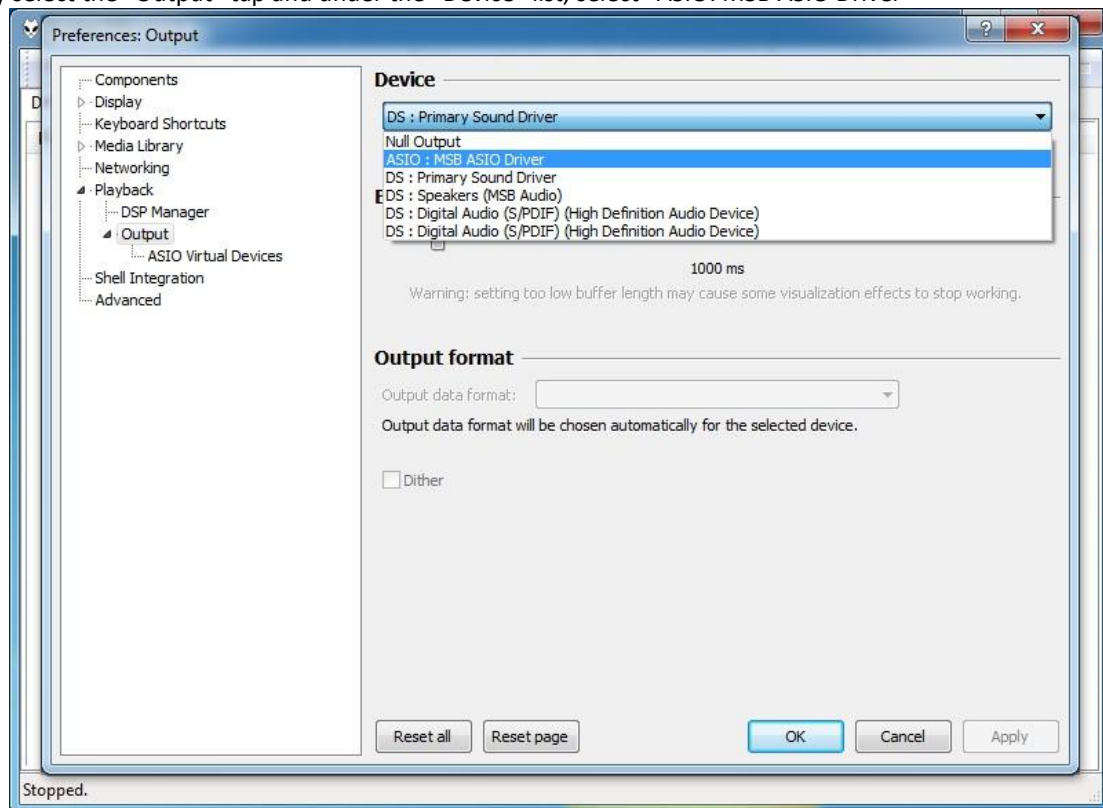
Then under “Playback” and “Output” select the option “ASIO Virtual Devices” Select “Add New”



Select the MSB ASIO Driver under the “Driver:” list and click “OK”



Finally select the “Output” tap and under the “Device” list, select “ASIO: MSB ASIO Driver”



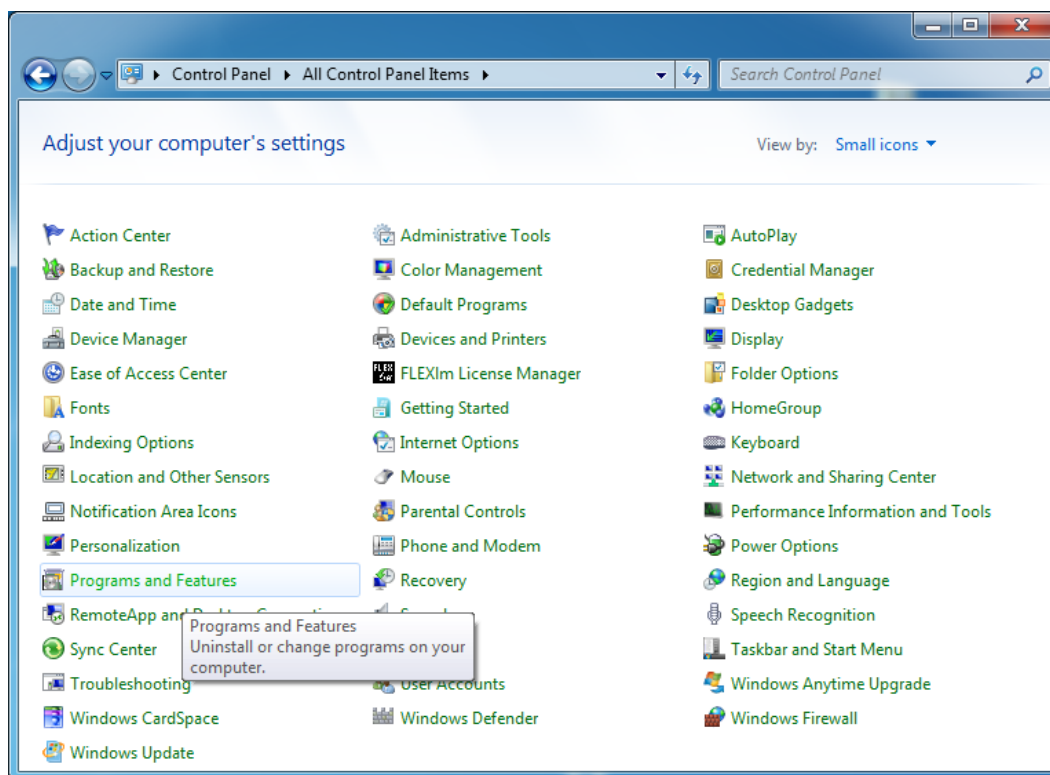
Click “OK” and your Foobar application setup is complete. Now when you play music the output sample-rate will match that of the original file. Just make sure you have the volume slider at 100% to avoid any unwanted digital manipulation.

How to remove the driver from Windows 7

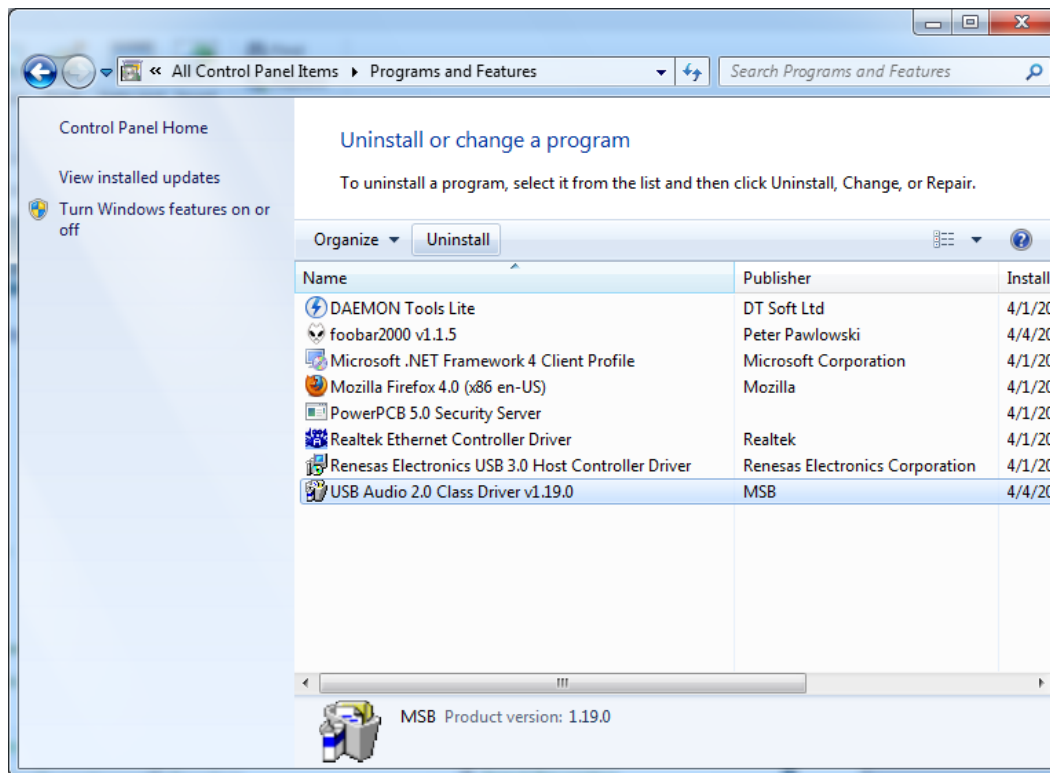
Start by going to the control panel by going to Start --> Control Panel
Select "Uninstall a program"



or as shown in the below view depending on your settings:



Next from the list select "USB Audio 2.0 Class Driver" or the MSB Audio Driver and click "Uninstall." Please note that the name of the driver will vary depending on which version you had. Follow the onscreen prompts.



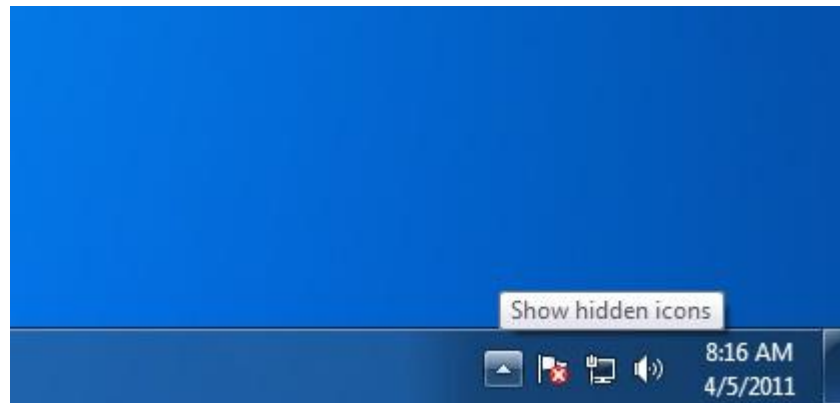
Once finished, you MUST restart your computer before attempting to install another version!

Checking and updating your USB Device Firmware

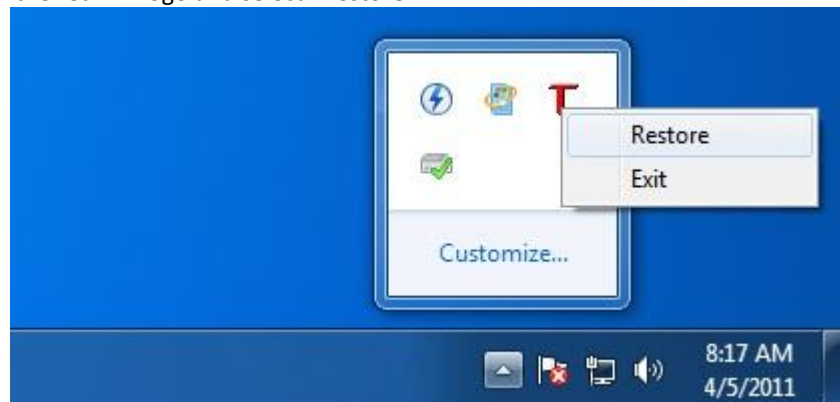
Here you will find instructions as to how to find out what USB Device version you are running and how to update it if necessary.

The first part is to open the USB Audio 2.0 Class Driver Control Panel. This program is always running, but is hidden in the task bar below.

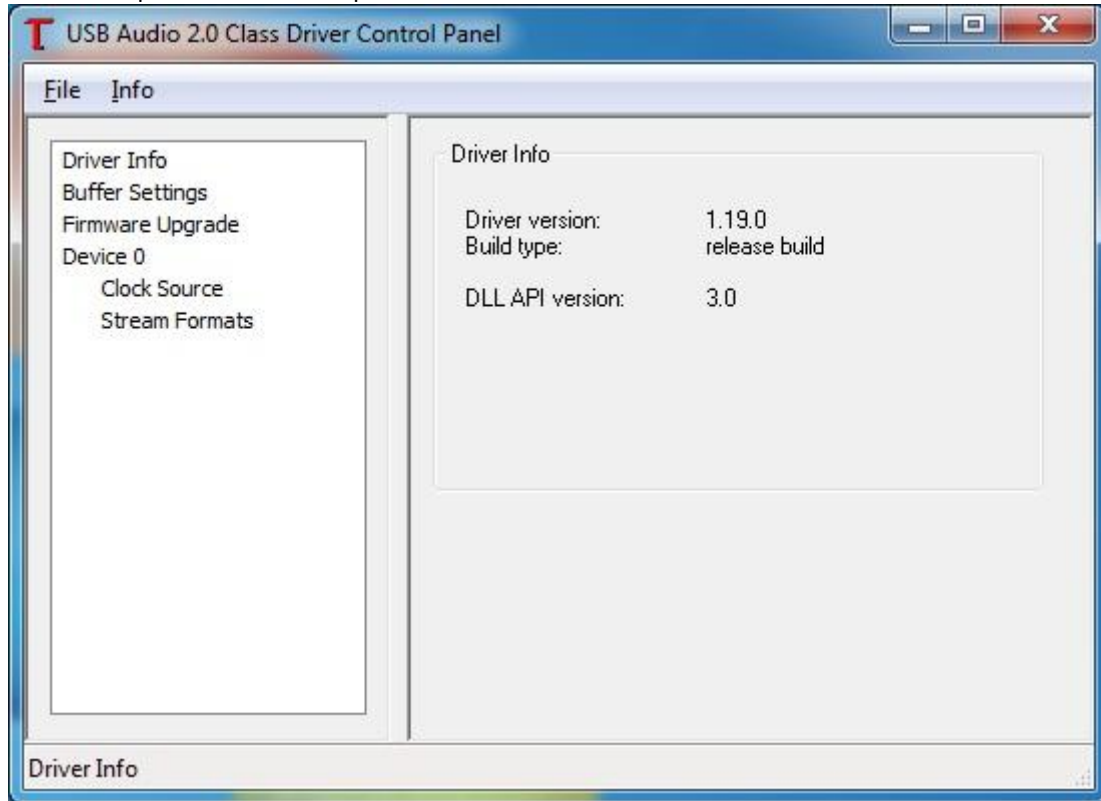
First click on the “Show hidden icons” button below.



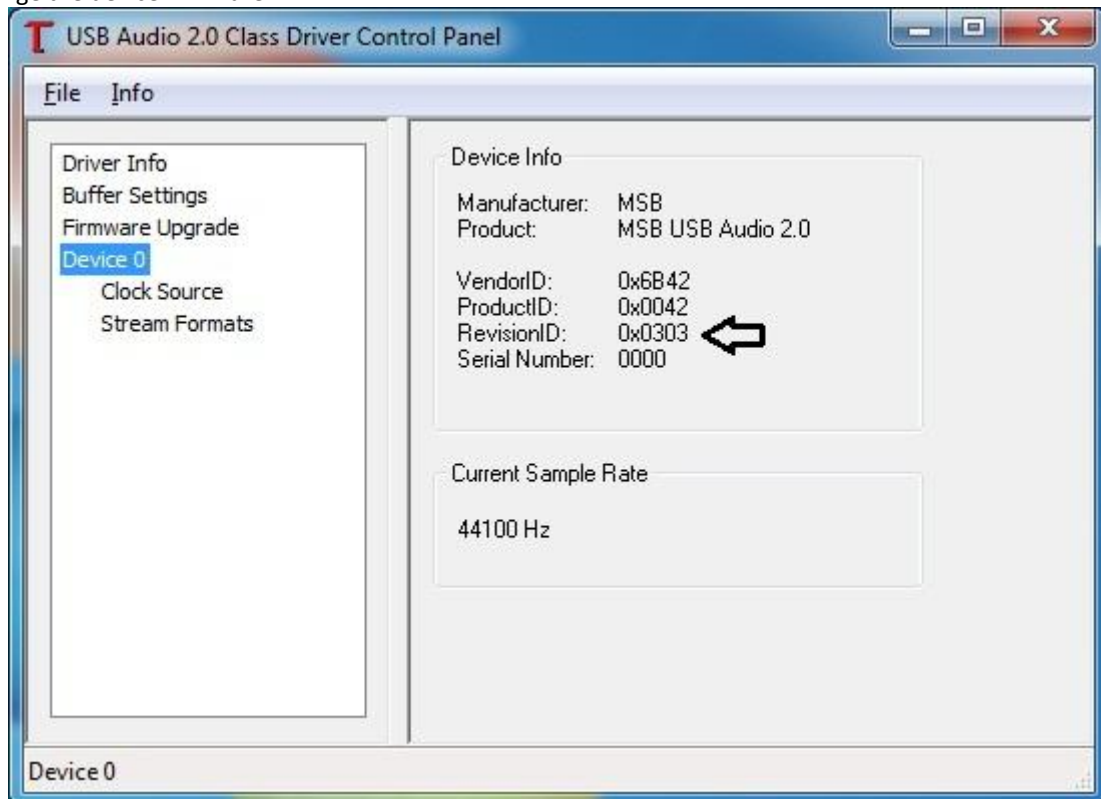
Next Right-click on the red “T” logo and select “Restore”



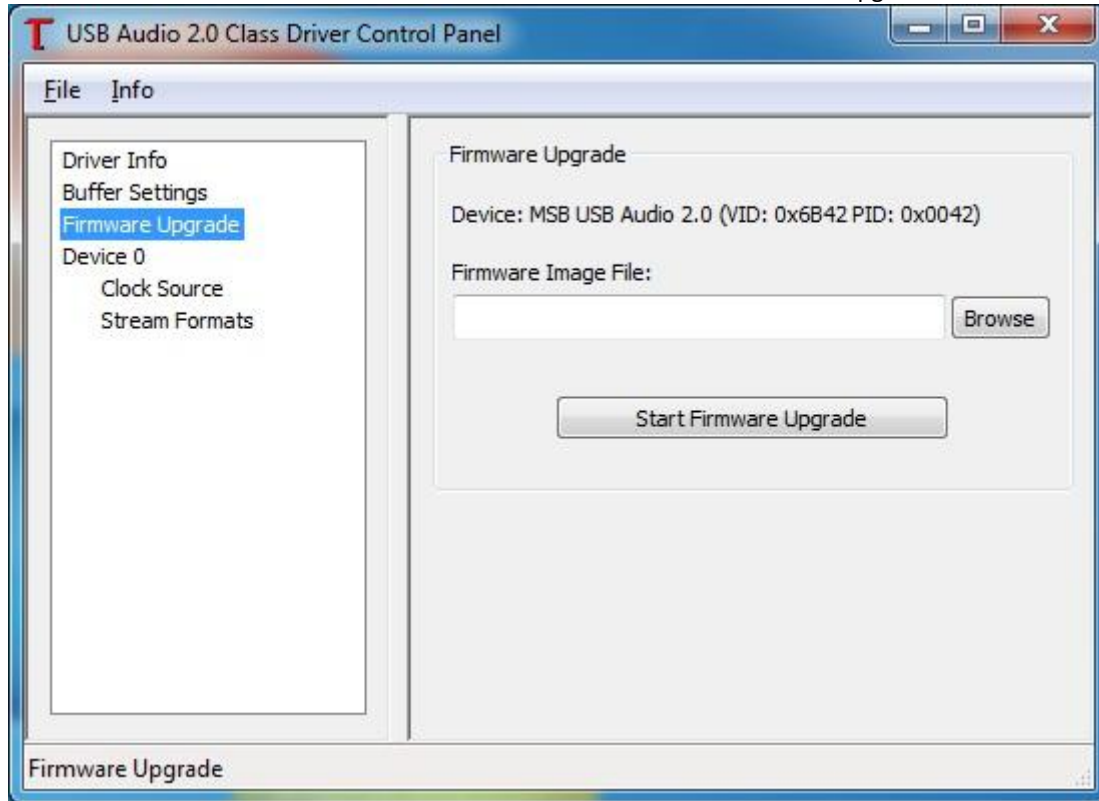
The below control panel window will open



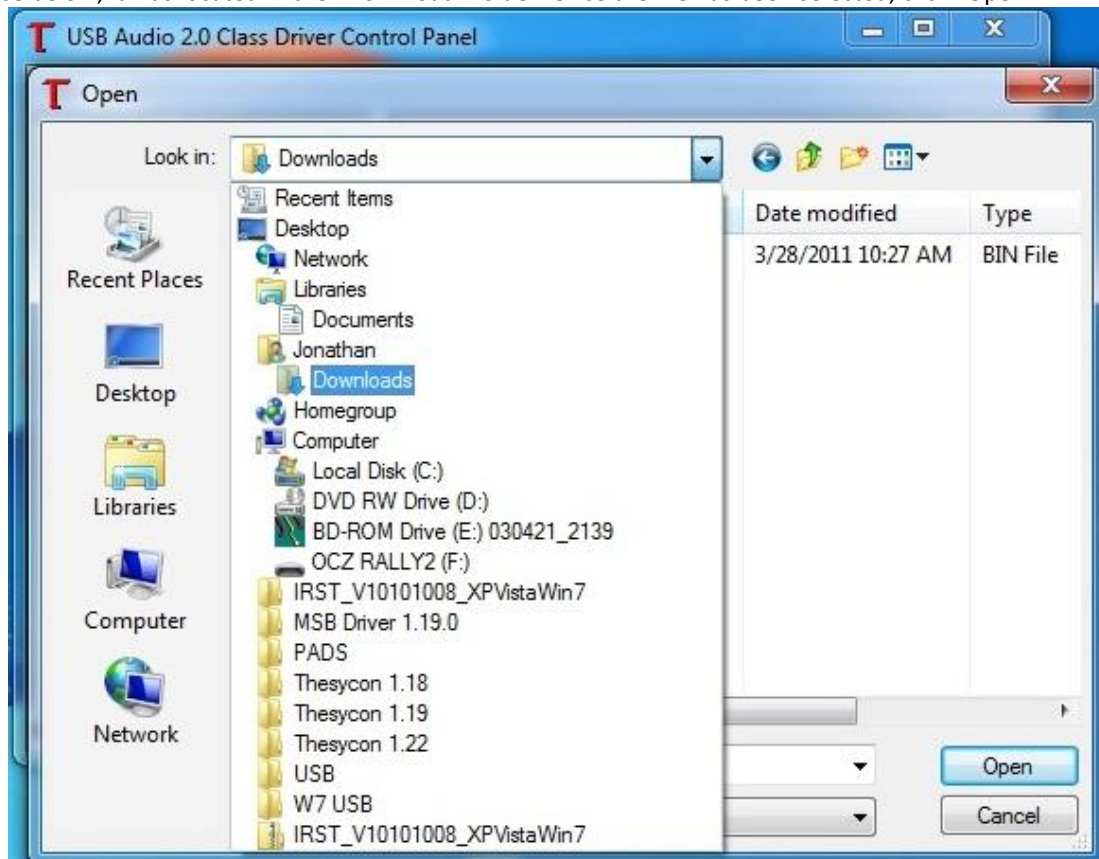
Click on "Device 0" from the list on the left side. Look at the field under Device Info called "RevisionID:" That is your USB Device rev number. In the case below, it would be 3.03. The following instructions will demonstrate how to change the device firmware.



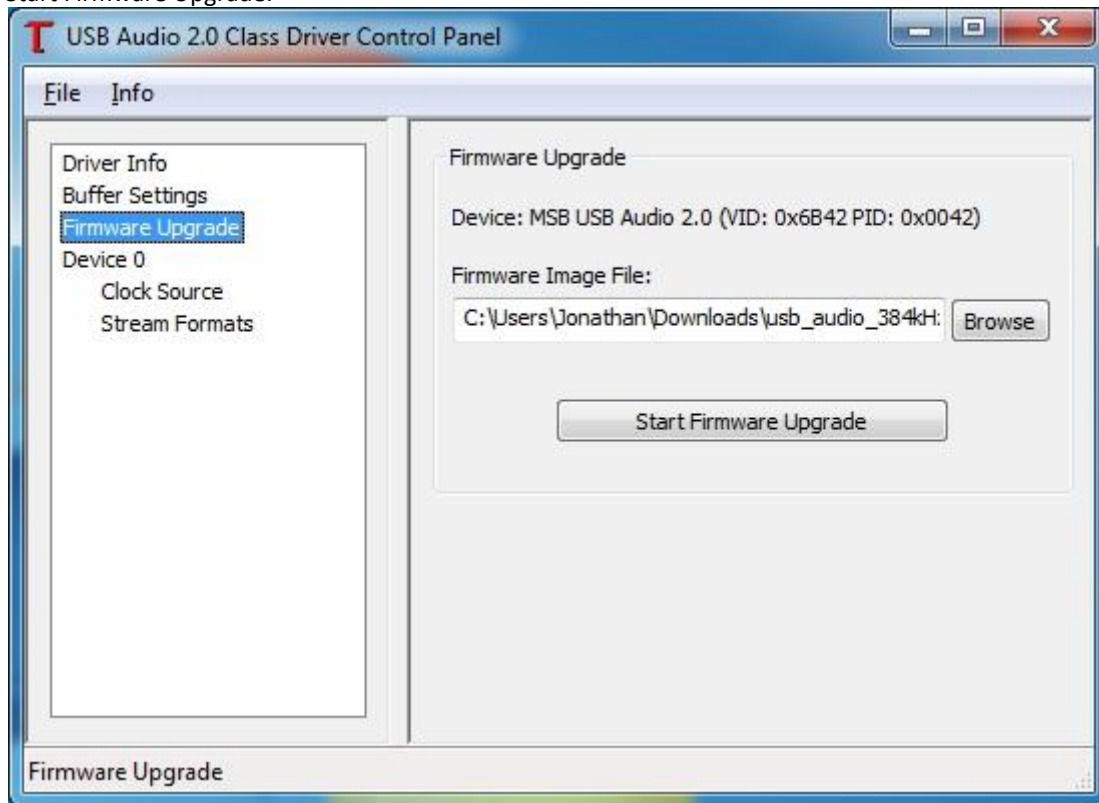
To update the firmware in the USB Audio Device click on the item called “Firmware Upgrade.”



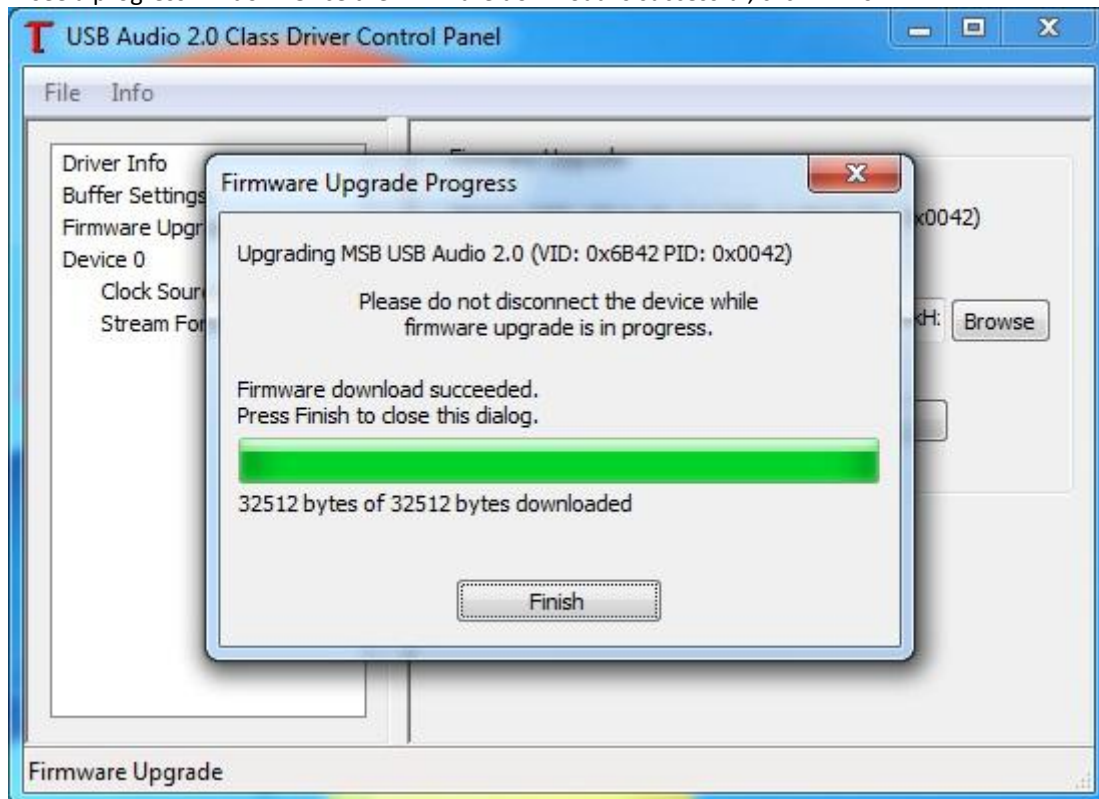
Select “Browse” and find the new firmware file that you’ve been provided with or downloaded from the web. In the case below, it was located in the “Download” folder. Once the file has been selected, click “Open.”



Once the file has been selected and downloaded, your window should look like below. At this point you should click, "Start Firmware Upgrade."



You will see a progress window. Once the firmware download is successful, click "Finish."



Verify that the new version has been installed by selecting "Device 0" again and looking at the "RevisionID:" field. In this case the Device has been updated to Rev. 1.71.

